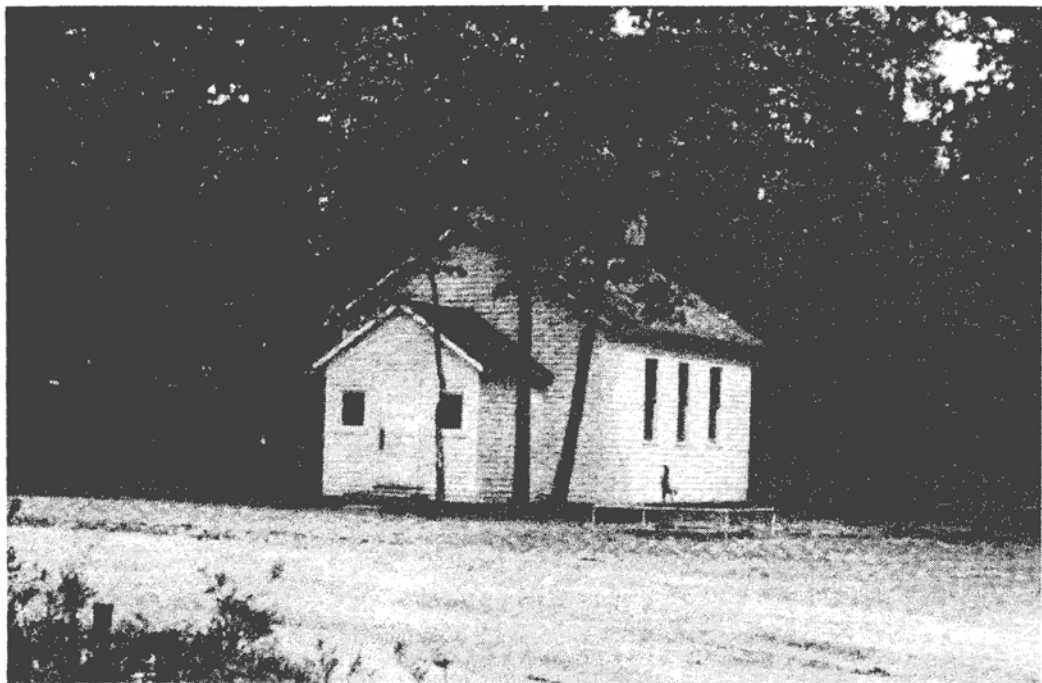


Rice Lake School School District #7

Rice Lake was a lake marsh that had wild rice growing in it that reached heights of six to eight feet. Before the area was settled, the Indians would come every fall to harvest the rice. The lake was drained around 1916 when the Rogue River Drain was constructed so that the land could be used for growing vegetable crops (onions, celery etc.) The school was named for Rice Lake and was located at 104th and Paw Paw in Section 1.

Ruth Throop was the teacher in the fall of 1941. May Robinson was the teacher in 1948.



A 1942 photo of Rice Lake School